

Software update of the MENNEKES ACU (device version v4) TLS 1.2

i

The requirements for secure encrypted communication to a backend system increasingly require encryption with TLS 1.2 or higher. Due to the size of the software update package, the software update of the operating system and the software of the MENNEKES ACU V4 (red housing) can only be performed on site via direct connection. Updating the software from the network or from the backend is not possible.

i

The software update package and further assistance can be requested by e-mail (see chapter "Download software update package." on page 2.).

i

- To install the software update, the user needs a laptop with administration rights, in order to change network settings if necessary.
- The software update is **only** possible **from software version 3482**.
- The Windows 10 operating system is used in this description. The illustrations and the user procedure may differ from this description depending on the operating system used.

i

This **software update is only released for the ACU device version v4** (red housing). The software update must **not** be installed on an ACU device version v3 (white housing)!

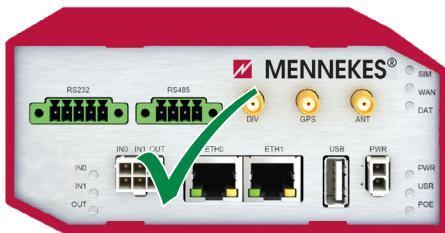


Fig. 1: ACU (device version v4)



Fig. 2: ACU (device version v3)

1. Get software update package

1.1 Request software update package from MENNEKES by e-mail

Request the software update package by e-mail: **emobility.support@MENNEKES.de**

Minimum information in the e-mail:

Full name

Company

Street and house number

Post code, location

1.2 Download software update package

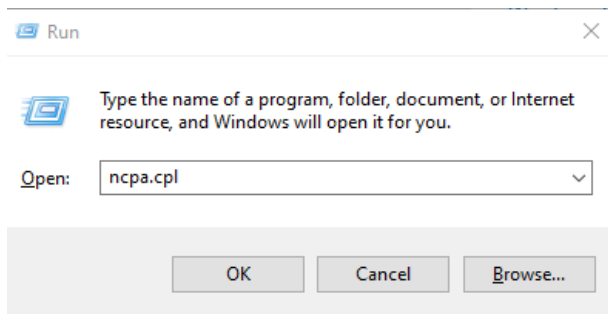
- ▶ Open e-mail from emobility.support@MENNEKES.de.
- ▶ Click link to software update package.
- ▶ Authenticate with password from the e-mail.
- ▶ Download software update package.
- ▶ **Unpack** the software update package (will be required later for installation).

2. Establish connection with the ACU

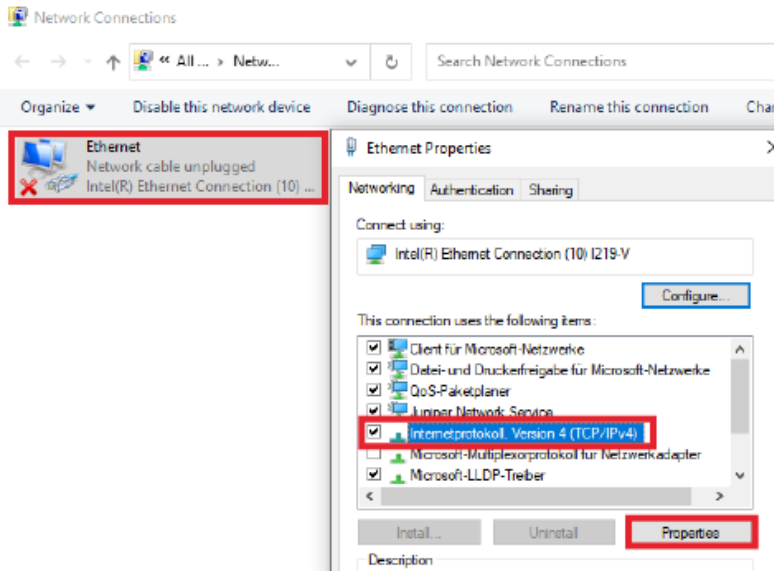
- The user needs administration rights on the laptop.

2.1 Configure network settings

- ▶ Right-click the Windows icon.
- ▶ In the context menu, select "Run".
- ▶ Enter "ncpa.cpl" in the new window.
- ▶ Confirm by clicking "OK".



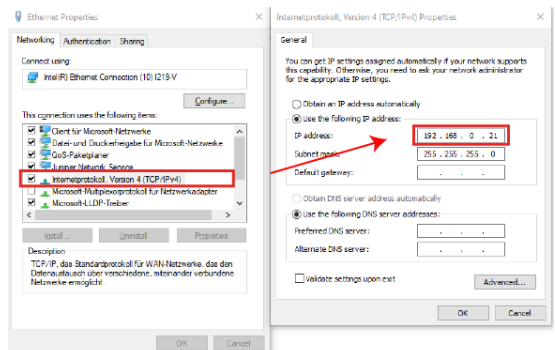
- ▶ Open Ethernet properties by double-clicking.
- ▶ Select "Internet protocol, Version 4".
- ▶ Open properties by clicking "Properties".



i

If the IP address of the Ethernet port differs from the standard IP address, enter the differing IP address range here. The default IP address range of the ETH0 interface is used in this example.

- ▶ Enter data and confirm by clicking "OK":
- IP address "192.168.0.21"
- Subnet mask "255.255.255.0"



2.2 Establish cable connection

- ▶ Open charging station or eMobility-Gateway (see operating and installation manual).
- ▶ Connect the preconfigured laptop to the ACU of the charging station or to the ACU of the eMobility-Gateway using a network cable.

The direct connection can be made on the following interfaces:

- On the Ethernet socket (RJ45) located in the charging column to the right of the meters (see Fig. 3).
- On the Ethernet port ETH0 of the ACU (see Fig. 4).

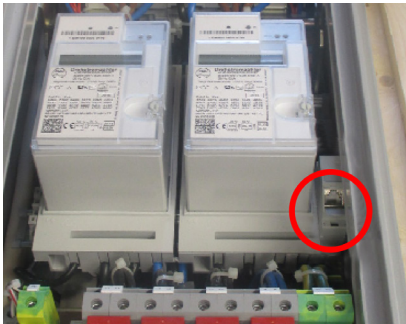


Fig. 3: Ethernet socket (RJ45)

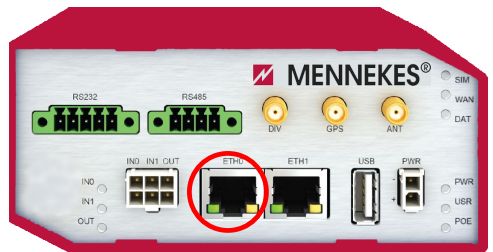


Fig. 4: Ethernet port "ETH0" on the ACU v4

3. Install software update

3.1 Execute the file "AcuUpdater.exe"

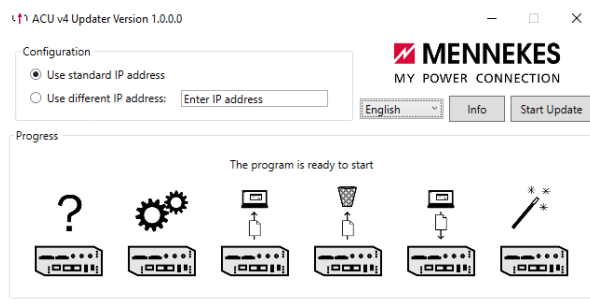
- ▶ Open the downloaded and unpacked software update.



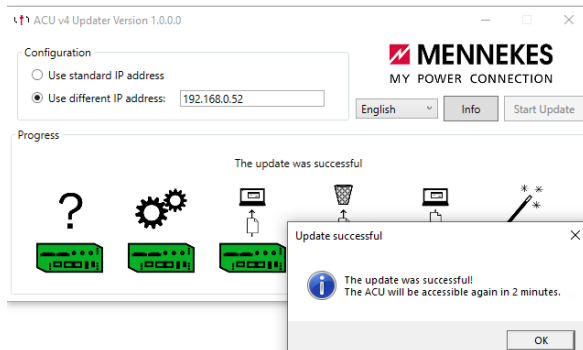
If an individual IP address has been assigned and differs from the standard IP address, the individual IP address must be entered under "Different IP address" before starting the software update.

- ▶ Execute the file "AcuUpdater.exe" by double-clicking.
- ▶ Start the software update by pressing "Start Update".

AcuUpdater.exe



The software update is executed. This can take more than 10 minutes. Following the software update, the ACU is restarted.



After a successful restart of the ACU, the TLS 1.2 encryption and the new software are installed, together with the new functions. The original configuration is retained.