

Wandcontactdoos

Bestelnr. 27001

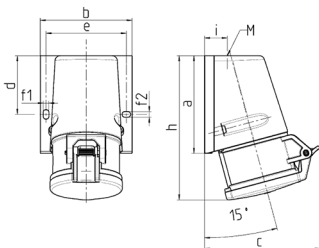


- schroefklemmen
- met buitenliggende bevestiging
- kabelinvoer aan bovenzijde

Technische informatie

| | |
|-------------------|----------------|
| Ampère | 16 A |
| Polen | 3 p |
| Voltage | 230 V |
| Uurstand | 6 h |
| Hertz | 50-60 Hz |
| Aansluittechniek | schroefklemmen |
| Contacten | standaard |
| Beschermingsgraad | IP 44 |
| Gewicht | 202 g |
| Certificeringen | VDE, EAC, CQC |

Tekeningen



| Drawing 1 MB 463 | Amp. Poles | 16 | | | 32 | | |
|---------------------|---------------------------------------------------------------|------|-------|-------|-------|-------|-------|
| | | 3 | 4 | 5 | 3 | 4 | 5 |
| Dim. in mm | a | 95 | 93 | 92.5 | 102 | 102 | 102 |
| | b | 73.5 | 87.5 | 87.5 | 94 | 94 | 94 |
| | c | 93 | 107.5 | 110 | 115.5 | 115.5 | 119.5 |
| | d | 55.5 | 55.5 | 55.5 | 62 | 62 | 62 |
| | e | 61 | 76 | 76 | 84 | 84 | 84 |
| | f1 | 5.3 | 5.3 | 5.3 | 5.1 | 5.1 | 5.1 |
| | f2 | 5.3 | 5.3 | 5.3 | 5.1 | 5.1 | 5.1 |
| | h | 139 | 139 | 136.5 | 160 | 160 | 156.5 |
| | i | 19.8 | 21.5 | 21.5 | 26.5 | 26.5 | 26.5 |
| | M | M20x | M25x | M25x | M25x | M32x | M32x |
| | Terminal for cond. cross section (mm ²) min.-max. | 1.5 | 1.5 | 1.5 | 1.5 | 1.5 | 1.5 |
| | | 1.5 | 1.5 | 1.5 | 2.5 | 2.5 | 2.5 |
| | | -4 | -4 | -4 | -6 | -6 | -6 |